

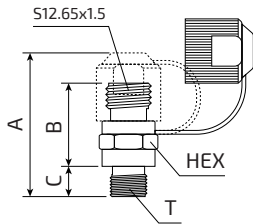
FITTINGS for ATM HOSES (MINIMESS-TYPE)

AUTOMOTIVE LINE

Raccordi per tubi ATM (tipo MINIMESS)

FITTINGS FOR LINKING GAS SPRINGS, CONTROL PANELS AND DISTRIBUTION BLOCKS

RACCORDI PER COLLEGAMENTO CILINDRI, PANNELLI DI CONTROLLO E BLOCCHI DI DISTRIBUZIONE

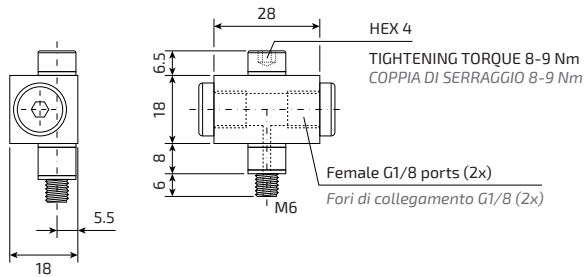


Model Modello	A mm	B mm	C mm	T	HEX	Tightening torque Coppia di serraggio	Non-return valve Valvola di non ritorno
ARM000-1/8	48	30	8	G1/8	14	ca. 18	NO
ARM000-1/8V	48	30	8	G1/8	14	ca. 18	YES
ARM000-1/4	43	21	12	G1/4	19	ca. 45	NO
ARM000-1/4V	43	21	12	G1/4	19	ca. 45	YES

ATTENTION! Use fittings **without** non-return valve when connecting gas springs and other devices to open system (hose system).
ATTENZIONE! Utilizzare raccordi **senza** valvola di non ritorno quando si collegano a sistema cilindri o altri dispositivi.

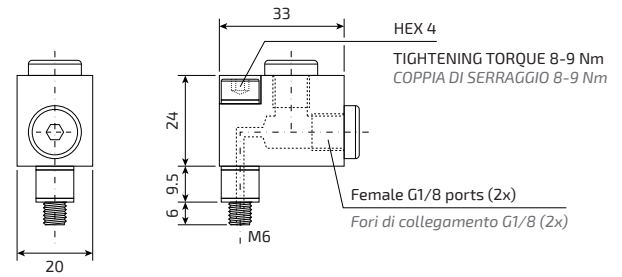
Model
Modello

ARM270-M6



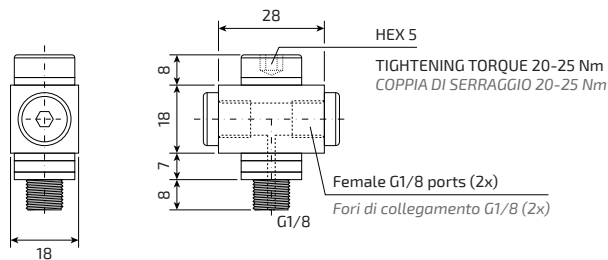
Model
Modello

ARM270R-M6



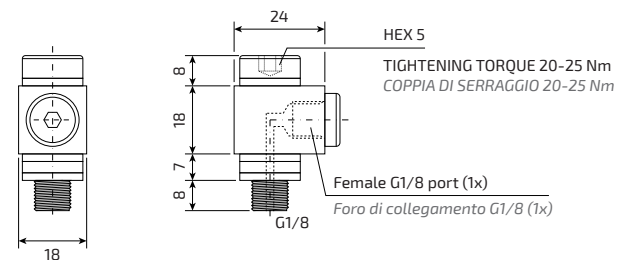
Model
Modello

ARM270-1/8



Model
Modello

ARM090-1/8



OTHER ACCESSORIES ALTRI ACCESSORI

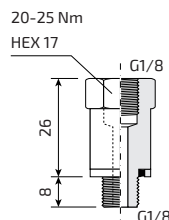
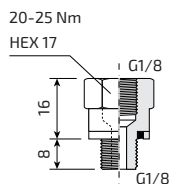
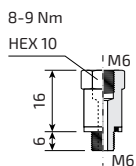
Extension fittings which may be needed in case of fixing with half-flanges
 Raccordi-prolunga che potrebbero essere necessari in caso di fissaggio con semiflange



PL-M6

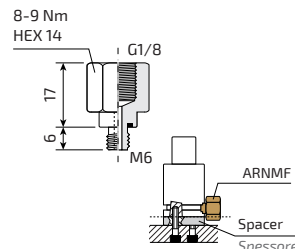
PL-1/8A

PL-1/8B



M6 to G1/8 side port converter
 Convertitore foro laterale da M6 a G1/8

ARNMF



Model
Modello

CFT-5

